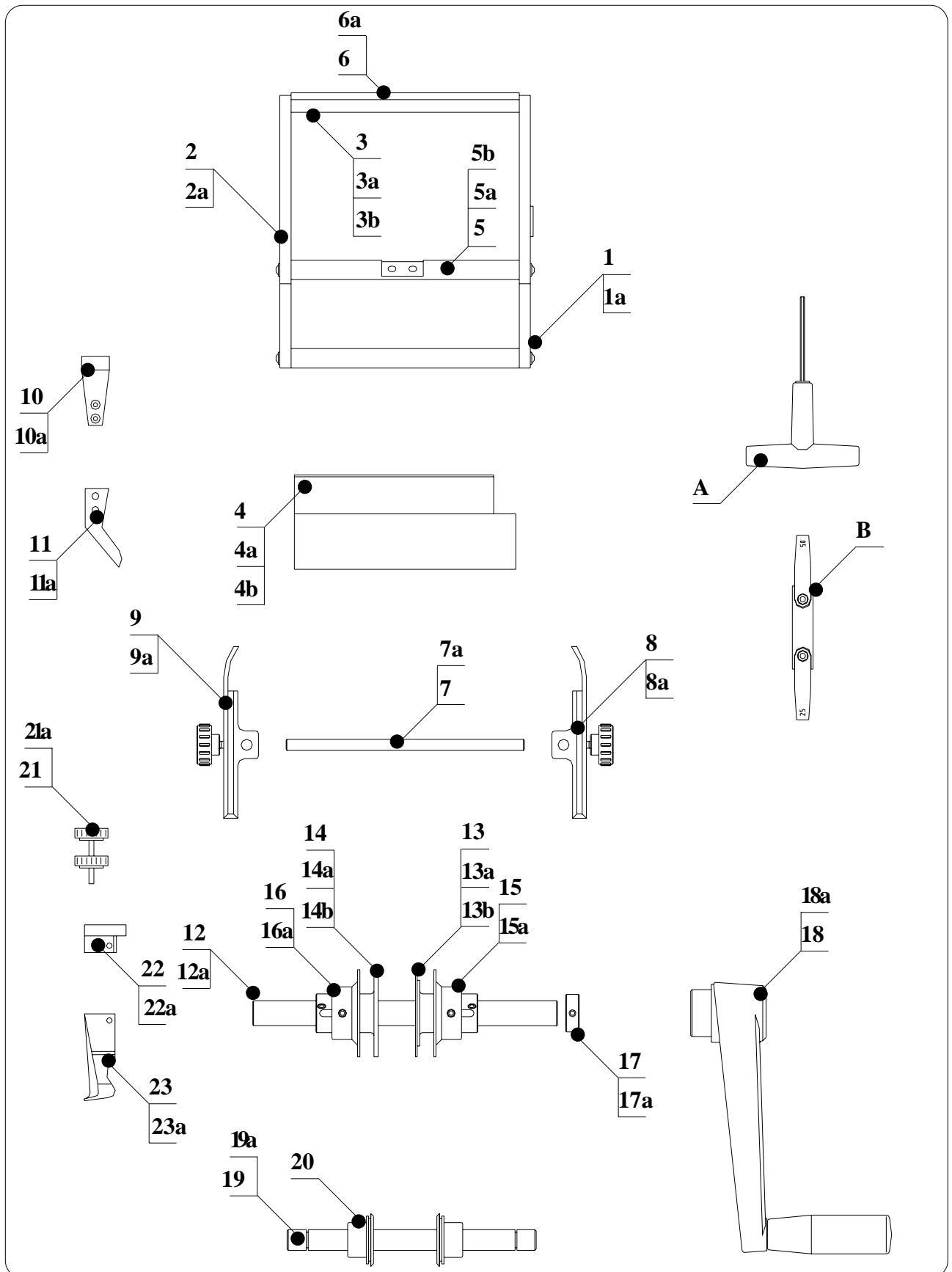


- 7 - SPARE PARTS

7.1 WARNING FOR THE CUSTOMER

Before ordering any particular spare part, it is always necessary to specify the serial number of the machine to which the part shall fit.

7.2 DETAILED DRAWING OF TP6 V EC MACHINE



7.2.1 READING KEY FOR DETAILED DRAWING TP6 V EC (81.OL01)

Pos.	Item	Description	Q.ty
1	810101	right machine's body	1
1a	400111	central bushing F 18/22/12	1
2	810102	right machine's body	1
2a	400111	central bushing F 18/22/12	1
3	230103	shaft	1
3a	750302	screw TBEI M 5x20	2
3b		washer	2
4	230106	shaft	1
4a	750302	screw TBEI M 5x20	4
4b		washer	4
5	230104	shaft	1
5a	750302	screw TBEI M 5x20	2
5b		washer	2
6	810103	plate	1
6a	750107	screw TCEI M4x12	4
7	400207	guide holding shaft	1
7a	400214	screw TS M 5x16	1
8	200201	right tape guide	1
8a	400210	knob M 5x16	1
9	800201	left tape guide Tp6/V	1
9a	400210	knob M 5x16	1
10	800103	component unloader holder p. 2.5-3.8	1
10a	400117	screw TC M 4x10	2
11	800104	component unloader	1
11a	400117	screw TCEI M4X10	2
12	400401	main shaft	1
12a	400415	radial clip RS 15 DIN 6799	1
13	800406	right inner toothed disc	1
13a	400304	screw PT M 6x8	1
13b	400429	needle Ø 5x9	1
14	800402	left inner toothed disc	1
14a	400304	screw PT M 6x8	1
14b	400429	needle Ø 5x9	1
15	200402	right outer toothed disc	1
15a	400413	screw PP M 6x5 Unbrako	1
16	200401	left outer toothed disc	1
16a	400413	screw PP M 6x5 Unbrako	1

17	310103	fixing ring DIN 705	1
17a	400304	screw PT M 6x8	1
18	400301	handle Elessa	1
18a	400305	screw PP M 6x10 Unbrako	1
19	200501	cutting shaft	1
19a	40053	radial clip RS 12 DIN 6799	2
20	400710	cutting wheel	2
21	800609	bending camme register	1
21a	--	screw TBEI M 6x30	1
22	800601	bending camme support	1
22a	--	screw TCEI M 5x12	4
23	800603	bending camme	1
23a	800606	parallel pin Ø 4X20	1

ADJUSTMENT TOOLSET

A	800805	thickness gauge	1
D	400804	Allen key	1

ANOTHER PARTS

80.OL03 Ø 0.5 - 0.8

23	800604	bending camme P 3.6	1
----	--------	---------------------	---

80.OL04 Ø 0.5 - 0.8

10	800106	component unloader holder P 5.08 - 7.5	1
11	800105	component unloader P 5.08 - 7.5	1
23	800605	bending camme P 5.08	1

80.OL05 Ø 0.5 - 0.8

10	800106	component unloader holder P 5.08 - 7.5	1
11	800105	component unloader P 5.08 - 7.5	1
23	800610	bending camme P 7.5	1

80.OL21 Ø 0.8 - 1.3

13	800405	right inner toothed disc dx Ø 0.8 - 1.3	1
14	800404	left inner toothed disc Ø 0.8 - 1.3	1
23		bending camme P 3.8	1

ADJUSTMENT TOOLSET

A	800706	thickness gauge P. 2.54 Ø 0.8 - 1.3	1
---	--------	-------------------------------------	---

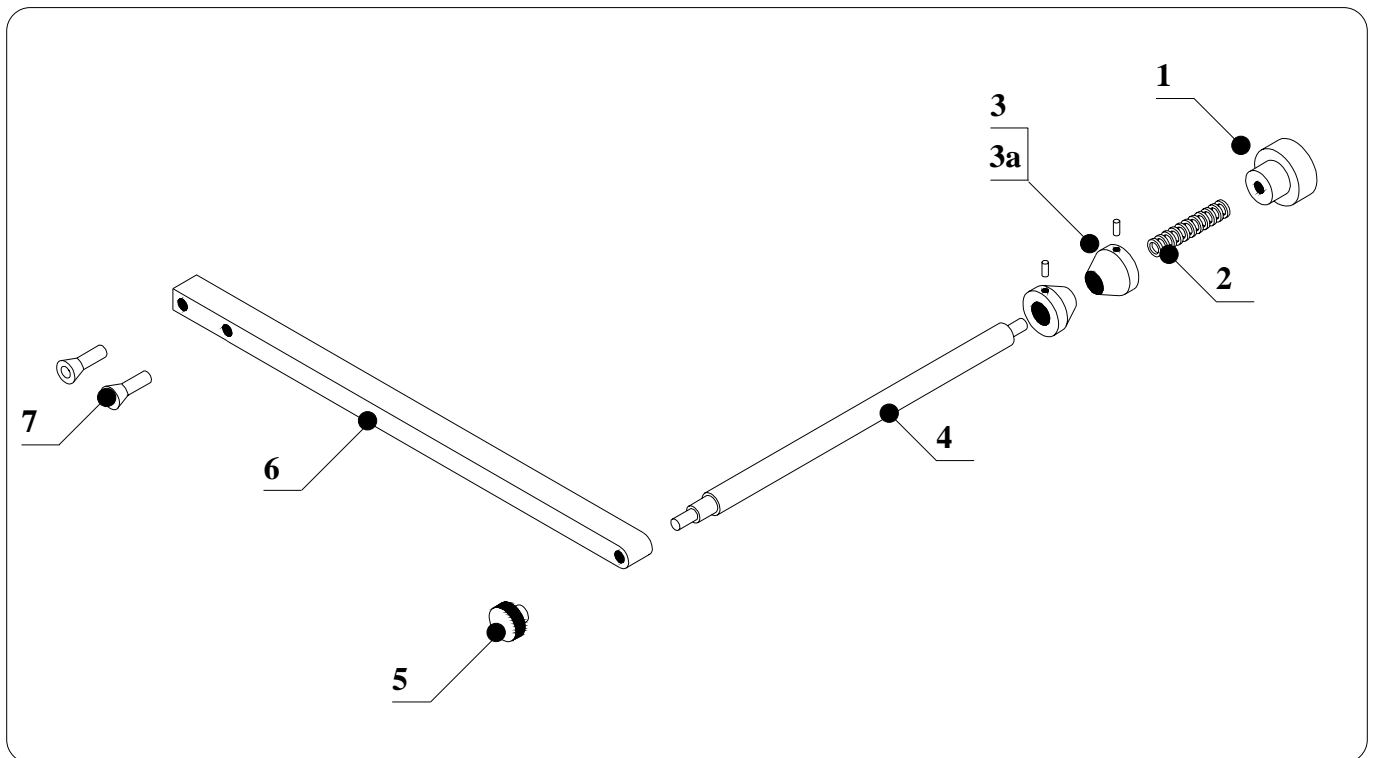
80.OL22 Ø 0.8 - 1.3

10	800106	component unloader holder P 5.08 - 7.5	1
11	800105	component unloader P 5.08 - 7.5	1
13	800405	right inner toothed disc dx Ø 0.8 - 1.3	1
14	800404	left inner toothed disc Ø 0.8 - 1.3	1
23		bending camme P 5.08	1

80.OL23 Ø 0.8 - 1.3

10	800106	component unloader holder P 5.08 - 7.5	1
11	800105	component unloader P 5.08 - 7.5	1
13	800405	right inner toothed disc dx Ø 0.8 - 1.3	1
14	800404	left inner toothed disc Ø 0.8 - 1.3	1
23		bending camme P 7.62	1

7.3 DETAILED DRAWING OF REEL HOLDER BR6



7.5.1 READING KEY FOR DETAILED DRAWING OF BR6

<i>Pos.</i>	<i>Item</i>	<i>Description</i>	<i>Q.ty</i>
1	400206	knob M 12	1
2	400204	spring	1
3	400203	centering cone	2
3a	210119	screw PP M 6x12	2
4	400201	reel holder	1
5	400205	knob M 8	1
6	400202	bar for reelholder	1
7	400212	screw TSEI M 5x20	2